

MOTOPLASTIC, S.A.

Molí de la sal, 1 - 08400 Granollers (Barcelona) SPAIN

Tel. 34 93 849 06 33 - Fax 34 93 849 09 88

info@puig.tv

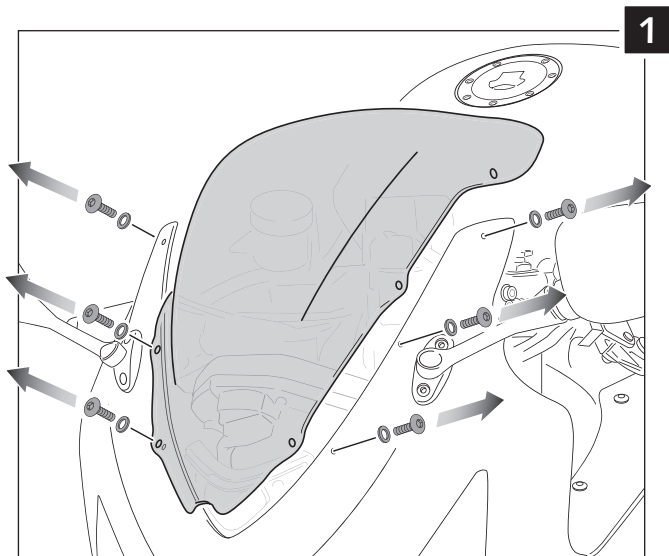
www.puig.tv

## INSTRUCCIONES DE MONTAJE - MOUNTING INSTRUCTIONS

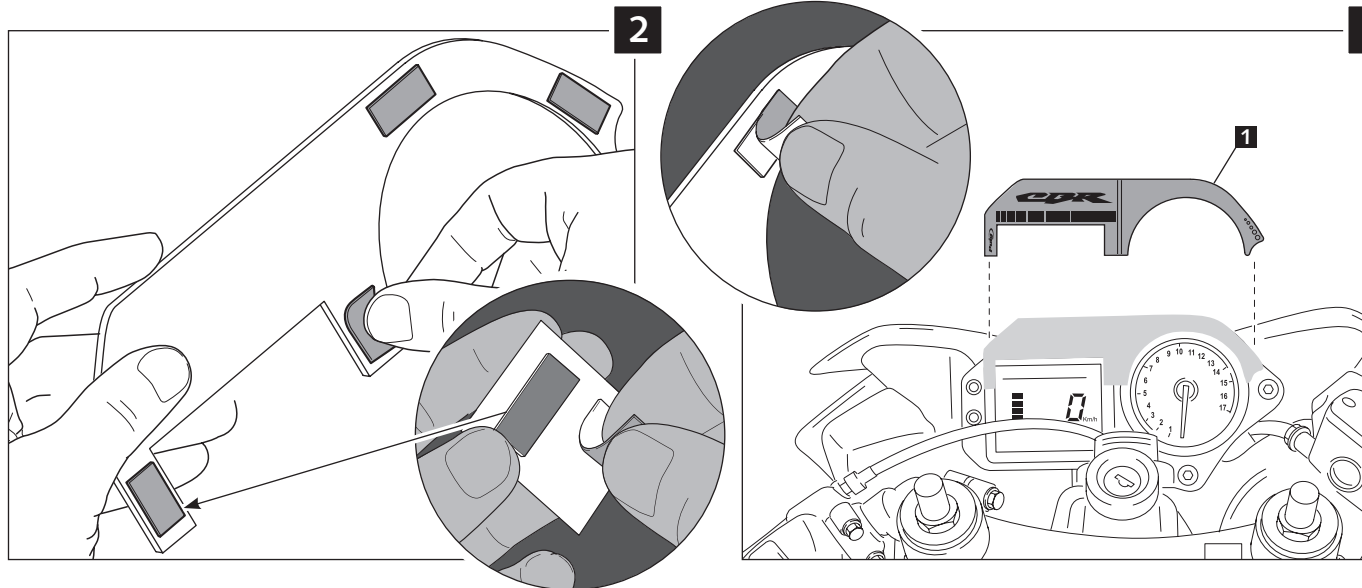
VISERA PARA EVITAR EL "EFECTO LUPA" DE LA CUPULA  
 PLATE TO AVOID "GLASS EFFECT" OF THE SCREEN

### HONDA CBR 600 F '01-'07

Ref.: 0861

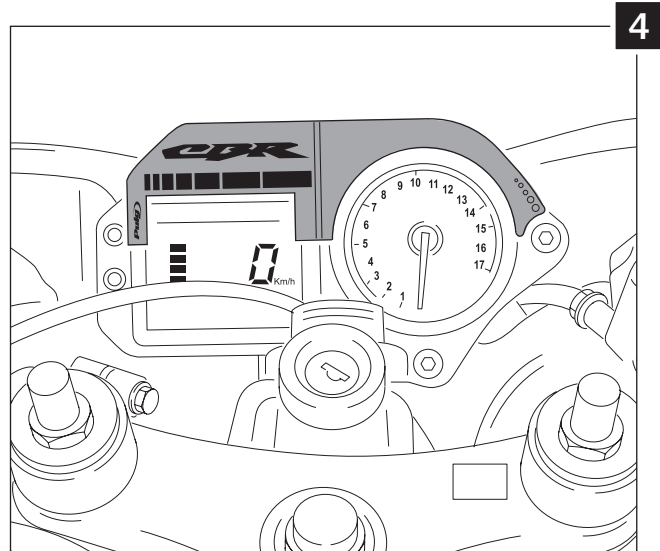


1





2

3



4

ID.	DESCRIPCIÓN	DESCRIPTION	QTY.
1	 Visera	Plate	1
2	 Tira autoadhesiva de 2 unidades de 18mm x 7mm	Adhesive strips 2 units 18mm x 7mm	2